

## AGLAE 2024

### PROFICIENCY TESTING SCHEME CATALOGUE

### Organic pollutants in waste waters



#### **AGLAE Association**

Parc des Pyramides  
427 rue des Bourreliers  
59320 Hallennes lez Haubourdin  
France

☎ +33 (0)3 20 16 91 40

[www.association-aglae.fr](http://www.association-aglae.fr)

[contact@association-aglae.fr](mailto:contact@association-aglae.fr)

## New programmes, list of programmes

### New programmes in the catalogue

59B AOF in waste waters

#### Organic pollutants in waste waters

4E Volatile organohalogens and benzene derivatives in waste waters

4Eb Volatile organohalogens and benzene derivatives in waste waters at low concentration levels

4F Methanol in waste waters

20B Chlorophenols in waste waters

21B Alkylphenols in waste waters

22B Chloroanilines in waste waters

23B Organo-tin compounds in waste waters

24B Brominated Diphenyl Ethers in waste waters

24C HBCDD in fresh waters and HBCDD, HBB in waste waters

25B Biphenyl in waste waters

26B DEHP in waste waters

27B C10-C13 chloroalkanes (SCCPs) in waste waters

28B Chloroacetic acid in waste waters

29B Epichlorohydrin in waste waters

52 AOX in waters

55A Glyphosate, AMPA and aminotriazole in waste waters

59A Perfluorinated compounds in waste waters

59B AOF in waste waters

71 PAHs and PCBs in waste waters

72A Pesticides and degradation residues - List 1 - in waste waters

72B Pesticides and degradation residues - List 2 - in waste waters

73 Alkylphenol ethoxylates in waste waters

## Matrices used

Name of the matrix for water chemistry	Below the matrices that can be used, alone or mixed, to comply with the representativity of the specified matrix	
	Waste waters from urban WWTP	Synthetic waters
Waste waters	x	x

WWTP: Waste Water Treatment Plant

## Participate in AGLAE's External Quality Control



A WAY OF WORKING THAT PROVIDES YOU WITH THE HIGHEST STANDARD OF RESULTS WITH CONFIDENTIALITY AND IMPARTIALITY

Each step of the way, AGLAE is there supporting you.

**REGISTRATIONS FOR PROFICIENCY TESTING ARE DONE KNOWING THE WHOLE PROCESS, WITH A DETAILED AND RIGOUROUS SCHEDULE**

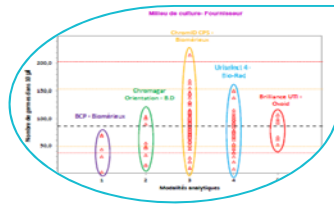


- ✓ The number of evaluations per year for each parameter is specified in the catalogue, concentration levels and stabilisation are available on request.
- ✓ AGLAE uses "express" shipments for your samples and makes sure of their distribution to your laboratory.
- ✓ A sufficient delay to analyse and the report the results.
- ✓ Via your member area, **enter your results and find instructions, assigned codes, reports, summaries of your results, certificate of participation...**

**THE OPTIMISATION OF RISK MANAGEMENT FOR YOUR LABORATORY**



- You have a better visibility of potential anomalies through:
- ✓ An appropriate test design (duplicate samples, repeated measurements),
  - ✓ A large number of participants: around 200 laboratories in the field of 'base' microbiology and 'base' physico-chemical analyses.



- AGLAE's detailed study:
- ✓ Influence of the analytical methods, manufacturers (equipment and consumables)... factors that we study to help you improve the quality of your analyses,
  - ✓ For waters intended for medical use and water microbiology, estimation of your own uncertainties in microbiology,
  - ✓ Check of your uncertainty estimates in chemistry (zeta-score),
  - ✓ A report validated by experts of the field and personalised for most tests.

**ATTRACTIVE DISCOUNTS, PAYMENT CONDITIONS MADE EASIER**

- Choose among the various programmes and benefit from discounts up to 15%,
- A possible payment in 2 or 3 folds depending on the amount your participation.
- Payment possible by cheque (in €), bank transfer, credit card on <https://www.helloasso.com/associations/a-g-l-a-e/paiements/aglae>

Amount of your invoice <i>(excluding transport cost)</i>	Discount
3000 ≤ Amount < 6000 € excl. VAT	<b>5%</b>
6000 ≤ Amount < 9000 € excl. VAT	<b>10%</b>
Amount ≥ 9000 € excl. VAT	<b>15%</b>

## Additional services



### ADDITIONAL TEST SAMPLES TO TEST ANOTHER METHOD, EVALUATE A TECHNICIAN

- ✓ Test samples available for almost all the tests at half price.
- ✓ Besides your usual distribution, you receive one (or several) additional parcel(s).
- ✓ The results of these samples are not statistically processed by AGLAE but for most tests you get a sheet **in your results file** where to **calculate your z-score**. Note that this sheet can also be used in case of unit error, incorrect results' report, etc.

⇒ Check the **list of samples and their price on your Member Area** (Downloads / Catalogues) and contact us to receive a quote. These additional samples need to be ordered after you registration for the test and before the shipment.



### QUALITY CONTROL MATERIALS FOR YOUR MONITORING AND IMPROVEMENT OF YOUR ANALYTICAL PERFORMANCE

- ✓ Materials coming from the **solid matrices tests: sediments, sludge, polluted sites and soils**.
- ✓ Purchased at any time during the year and delivered with a certificate presenting the precision values obtained during the test (assigned value and uncertainties).

⇒ Check the **list of materials, prices and available quantities on your Member Area** (Downloads / Catalogues) and contact us to receive a quote.

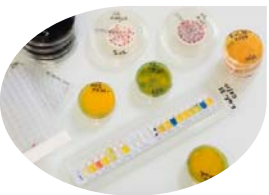


### TRAINING SESSIONS IN MICROBIOLOGY: ONE TOPIC POSSIBLY PROVIDED IN ENGLISH

Two-day on-line session to become operational for:

- ✓ Characterising a microbiological method according to ISO 13843 in order to validate it

⇒ *Should you be interested in such a session, please get back to us.*



### CUSTOMIZED SERVICE: 'PERFORMANCE CHARACTERISTICS OF MICROBIOLOGICAL METHODS'

Do you need to characterise specific methods?

AGLAE can provide you support to establish methods performance characteristics, in conformity with ISO 13843\*. Benefit from AGLAE's technical and statistical experience to validate your microbiological method.

\* *Water quality — Requirements for establishing performance characteristics of quantitative microbiological methods*

⇒ *Should you have such needs, contact us to study your request together and issue a quote.*



### SUMMARY OF YOUR RESULTS FOR WATER MICROBIOLOGY AND WATER FOR MEDICAL USE TESTS

Gather at any time your results and performance: for a selected period, your results are grouped in an Excel file; this is a tool to support you in your Internal Quality Control, your audits...

## Programmes' description

### Content

For each programme's description, you will find the technical content of the test : volumes, parameters, matrices, dispatch month...

The concentration levels and stabilisation modalities of the samples are available on request.

*The samples' dispatch months are given for information only.*

**Transport costs depend on the destination and tests selected within the programmes; contact us to get a quote.**

Our aim is to prepare materials as close as possible to the samples analysed in routine: the contamination levels can therefore be very low or very high.

➔ **Our concentration levels are available on request.**

### Caption



This logo shows that the programme is accredited by LABORATORIES section in compliance with ISO/IEC 17043.

## PROGRAMME 4E: VOLATILE ORGANOHALOGENS AND BENZENE DERIVATIVES IN WASTE WATERS



€ 565 excl. VAT - total amount for 1 test (excluding transport costs)

35 participants in 2023 – EXPERIENCE: 25 YEARS



**Need to test another method, evaluate your staff?**

Order **additional test samples** (parcel in its entirety): € 285 excl. VAT (excluding transport costs)

### Parameters to analyse

#### 24M4E.1 - Waste water - sent in January 2024 - Refrigerated parcel

**BTEX:** benzene, ethylbenzene, isopropylbenzene, toluene, xylene ortho, xylene para + xylene meta, total xylenes

**VOHs:** 1,2-dichloroethane, bromoform, chloroform, dibromochloromethane, dichlorobromomethane, tetrachloroethylene, trichloroethylene, vinyl chloride

**chlorobenzenes - light:** 1,2-dichlorobenzene, 1,3-dichlorobenzene, 1,4-dichlorobenzene, chlorobenzene, dichlorobenzenes (sum of the 3 isomers)

**chlorotoluenes:** 2-chlorotoluene, 3-chlorotoluene, 4-chlorotoluene, chlorotoluenes (sum of the 3 isomers),

**VOHs:** 1,1,1-trichloroethane, 1,1,2,2-tetrachloroethane, 1,1,2-trichloroethane, 1,1-dichloroethane, 1,1-dichloroethylene, 1,2-dichloroethylene (cis+trans), 1,2-dichloroethylene cis, 1,2-dichloroethylene trans, 3-chloroprene (3-chloropropene), carbon tetrachloride, chloroprene, dichloromethane, hexachlorobutadiene, hexachloroethane

hexachlorobutadiene

**nitro-aromatics:** 1-chloro-2-nitrobenzene, 1-chloro-3-nitrobenzene, 1-chloro-4-nitrobenzene, 2-nitrotoluene, nitrobenzene

**chlorobenzenes:** 1,2,4,5-tetrachlorobenzene, tetrachlorobenzenes (sum of the 3 isomers), 1,2,3-trichlorobenzene, 1,2,4-trichlorobenzene, 1,3,5-trichlorobenzene, trichlorobenzenes (sum of the 3 isomers), hexachlorobenzene, pentachlorobenzene

### PARTICULARITIES



For the group of parameter: chlorobenzenes and nitro-aromatics, you will receive a concentrated solution in addition to the bottles of waste water. The analyses have to be carried out with the reconstituted samples.



#### Other recommended proficiency tests:

↳ **Programme 4Eb** 'Volatile organohalogenes and benzene derivatives in waste waters at low concentration levels - **'Environmental approval'** (contact us for the concentration ranges).

## PROGRAMME 4Eb: VOLATILE ORGANOHALOGENS AND BENZENE DERIVATIVES IN WASTE WATERS AT LOW CONCENTRATION LEVELS



€ 317 excl. VAT - total amount for 1 test (excluding transport costs)

34 participants in 2023 - EXPERIENCE: 25 YEARS



**Need to test another method, evaluate your staff?**

Order **additional test samples** (parcel in its entirety): € 160 excl. VAT (excluding transport costs)

### Parameters to analyse

#### 24M4Eb.1 - Waste water - sent in October 2024 - Refrigerated parcel

**BTEX:** benzene, ethylbenzene, isopropylbenzene, toluene, xylene ortho, xylene para + xylene meta, total xylenes

**VOHs:** 1,2-dichloroethane, bromoform, chloroform, dibromochloromethane, dichlorobromomethane, tetrachloroethylene, trichloroethylene, vinyl chloride

**chlorobenzenes - light:** 1,2-dichlorobenzene, 1,3-dichlorobenzene, 1,4-dichlorobenzene, chlorobenzene, dichlorobenzenes (sum of the 3 isomers) **chlorotoluenes:** 2-chlorotoluene, 3-chlorotoluene, 4-chlorotoluene, chlorotoluenes (sum of the 3 isomers),

**VOHs:** 1,1,1-trichloroethane, 1,1,2,2-tetrachloroethane, 1,1,2-trichloroethane, 1,1-dichloroethane, 1,1-dichloroethylene, 1,2-dichloroethylene (cis+trans), 1,2-dichloroethylene cis, 1,2-dichloroethylene trans, 3-chloroprene (3-chloropropene), carbon tetrachloride, chloroprene, dichloromethane, hexachlorobutadiene, hexachloroethane

**nitro-aromatics:** 1-chloro-2-nitrobenzene, 1-chloro-3-nitrobenzene, 1-chloro-4-nitrobenzene, 2-nitrotoluene, nitrobenzene

**chlorobenzenes:** 1,2,4,5-tetrachlorobenzene, tetrachlorobenzenes (sum of the 3 isomers), 1,2,3-trichlorobenzene, 1,2,4-trichlorobenzene, 1,3,5-trichlorobenzene, trichlorobenzenes (sum of the 3 isomers), hexachlorobenzene, pentachlorobenzene

### PARTICULARITIES



For the group of parameters: chlorobenzenes and nitro-aromatics, you will receive a concentrated solution in addition to the bottles of waste water. The analyses have to be carried out with the reconstituted samples.

**'Environment approval':** this is an additional proficiency test identical to the tests of programme 4E but at low concentration levels to meet the requirements of French legislation (contact us for the concentration ranges).

## PROGRAMME 4F: METHANOL IN WASTE WATERS

€ 96 excl. VAT - total amount for 1 test (excluding transport costs)

5 participants in 2023 - EXPERIENCE: 5 YEARS



**Need to test another method, evaluate your staff?**

Order **additional test samples** (parcel in its entirety): € 50 excl. VAT (excluding transport costs)

### Parameters to analyse

#### 24M4F.1 - Waste water - sent in October 2024 - Refrigerated parcel

methanol

#### PARTICULARITIES

It is possible that the number of results reported is not sufficient for statistical processing of the data. In this case, comments on the participants' performance will be included in the report.



## PROGRAMME 20B: CHLOROPHENOLS IN WASTE WATERS



€ 189 excl. VAT - total amount for 2 tests (excluding transport costs)

22 participants in 2023 - EXPERIENCE > 10 YEARS



**Need to test another method, evaluate your staff?**

Order **additional test samples** (parcel in its entirety): € 50 excl. VAT (excluding transport costs)

### Parameters to analyse

#### 24M20B.1 - Waste water - sent in January 2024 - Refrigerated parcel

2-chlorophenol, 3-chlorophenol, 4-chlorophenol,  
chlorophenols (sum of the 3 isomers),  
2,4-dichlorophenol, dichlorophenols (sum of the 6 isomers),  
2,4,5-trichlorophenol, 2,4,6-trichlorophenol,  
trichlorophenols (sum of the 6 isomers),  
pentachlorophenol, 4-chloro-3-methylphenol

#### 24M20B.2 - Waste water - sent in May 2024 - Refrigerated parcel

2-chlorophenol, 3-chlorophenol, 4-chlorophenol,  
chlorophenols (sum of the 3 isomers),  
2,4-dichlorophenol, dichlorophenols (sum of the 6 isomers),  
2,4,5-trichlorophenol, 2,4,6-trichlorophenol,  
trichlorophenols (sum of the 6 isomers),  
pentachlorophenol, 4-chloro-3-methylphenol

### PARTICULARITIES



You will receive a concentrated solution in addition to the bottles of waste water. The analyses have to be carried out with the reconstituted samples.

## PROGRAMME 21B: ALKYLPHENOLS IN WASTE WATERS



€ 185 excl. VAT - total amount for 2 tests (excluding transport costs)

18 participants in 2023 - EXPERIENCE > 10 YEARS



**Need to test another method, evaluate your staff?**

Order **additional test samples** (parcel in its entirety): € 50 excl. VAT (excluding transport costs)

### Parameters to analyse

#### 24M21B.1 - Waste water - sent in January 2024 - Refrigerated parcel

4-n-nonylphenol [CAS 104-40-5],  
4-nonylphenols [CAS 84852-15-3],  
4-tert-octylphenol [CAS 140-66-9],  
nonylphenols (mix of linear or branched),  
p-(n-octyl)phenol [CAS 1806-26-4],  
p-octylphenols (mix of isomers)<sup>[1]</sup>

#### 24M21B.2 - Waste water - sent in May 2024 - Refrigerated parcel

4-n-nonylphenol [CAS 104-40-5],  
4-nonylphenols [CAS 84852-15-3],  
4-tert-octylphenol [CAS 140-66-9],  
nonylphenols (mix of linear or branched),  
p-(n-octyl)phenol [CAS 1806-26-4],  
p-octylphenols (mix of isomers)<sup>[1]</sup>

<sup>[1]</sup> parameter not covered by accreditation (see general conditions of registration)

### PARTICULARITIES



You will receive a concentrated solution in addition to the bottles of waste water. The analyses have to be carried out with the reconstituted samples.

## PROGRAMME 22B: CHLOROANILINES IN WASTE WATERS



€ 157 excl. VAT - total amount for 2 tests (excluding transport costs)

9 participants in 2023 - EXPERIENCE > 10 YEARS



**Need to test another method, evaluate your staff?**

Order **additional test samples** (parcel in its entirety): € 40 excl. VAT (excluding transport costs)

### Parameters to analyse

#### 24M22B.1 - Waste water - sent in January 2024 - Refrigerated parcel

2-chloroaniline, 3-chloroaniline, 4-chloroaniline,  
Chloroanilines (sum of the 3 isomers),  
3,4-dichloroaniline, 4-chloro-2-nitroaniline

#### 24M22B.2 - Waste water - sent in May 2024 - Refrigerated parcel

2-chloroaniline, 3-chloroaniline, 4-chloroaniline,  
Chloroanilines (sum of the 3 isomers),  
3,4-dichloroaniline, 4-chloro-2-nitroaniline

### PARTICULARITIES



You will receive a concentrated solution in addition to the bottles of waste water. The analyses have to be carried out with the reconstituted samples.

For some parameters, it is possible that the number of results reported is not sufficient for statistical processing of the data. In this case, comments on the participants' performance will be included in the report.

**PROGRAMME 23B:  
ORGANOTIN COMPOUNDS IN WASTE WATERS**



€ 187 excl. VAT - total amount for 2 tests (excluding transport costs)

21 participants in 2023 - EXPERIENCE > 10 YEARS



**Need to test another method, evaluate your staff?**

Order **additional test samples** (parcel in its entirety): € 50 excl. VAT (excluding transport costs)

**Parameters to analyse**

**24M23B.1 - Waste water - sent in February 2024 - Refrigerated parcel**

monobutyltin cation, dibutyltin cation,  
tributyltin cation, triphenyltin cation,  
tetrabutyltin

**24M23B.2 - Waste water - sent in July 2024 - Refrigerated parcel**

monobutyltin cation, dibutyltin cation,  
tributyltin cation, triphenyltin cation,  
tetrabutyltin

**PARTICULARITIES**



You will receive a concentrated solution in addition to the bottles of waste water. The analyses have to be carried out with the reconstituted samples.

## PROGRAMME 24B: BROMINATED DIPHENYL ETHERS IN WASTE WATERS



**€ 247 excl. VAT** - total amount for 2 tests (excluding transport costs)

**11 participants** in 2023 - EXPERIENCE > 10 YEARS



**Need to test another method, evaluate your staff?**

Order **additional test samples** (parcel in its entirety): **€ 65 excl. VAT** (excluding transport costs)

### Parameters to analyse

#### 24M24B.1 - Waste water - sent in February 2024 - Refrigerated parcel

BDE-28, BDE-47, BDE-99, BDE-100,  
BDE-153, BDE-154, BDE-183, BDE-209

#### 24M24B.2 - Waste water - sent in October 2024 - Refrigerated parcel

BDE-28, BDE-47, BDE-99, BDE-100,  
BDE-153, BDE-154, BDE-183, BDE-209

### PARTICULARITIES



You will receive a concentrated solution in addition to the bottles of waste water. The analyses have to be carried out with the reconstituted samples.

## PROGRAMME 24C: HBCDD IN FRESH WATERS AND HBCDD, HBB IN WASTE WATERS



€ 361 excl. VAT - total amount for 2 tests (excluding transport costs)

14 participants in 2023 - EXPERIENCE: 5 YEARS

### Parameters to analyse

#### 24M24C.1 - Natural water - sent in April 2024 - Refrigerated parcel

alpha-HBCDD (alpha-hexabromocyclododecane)  
beta-HBCDD (beta-hexabromocyclododecane)  
gamma-HBCDD (gamma-hexabromocyclododecane)  
total HBCDD (total hexabromocyclododecane)

#### 24M24C.2 - Waste water - sent in October 2024 - Refrigerated parcel

total HBCDD (total hexabromocyclododecane)  
HBB (hexabromobiphenyl)<sup>[1]</sup>

<sup>[1]</sup> parameter not covered by accreditation (see general conditions of registration)

### PARTICULARITIES



You will receive a concentrated solution in addition to the bottles of natural water or waste water. The analyses have to be carried out with the reconstituted samples.

## PROGRAMME 25B: BIPHENYL IN WASTE WATERS



**€ 213 excl. VAT** - total amount for 2 tests (excluding transport costs)

**11 participants** in 2023 - EXPERIENCE > 10 YEARS



**Need to test another method, evaluate your staff?**

Order **additional test samples** (parcel in its entirety): **€ 55 excl. VAT** (excluding transport costs)

Parameters to analyse
<b>24M25B.1 - Waste water - sent in February 2024 - Refrigerated parcel</b>
biphenyl
<b>24M25B.2 - Waste water - sent in November 2024 - Refrigerated parcel</b>
biphenyl

### PARTICULARITIES



You will receive a concentrated solution in addition to the bottles of waste water. The analyses have to be carried out with the reconstituted samples.

## PROGRAMME 26B: DEHP IN WASTE WATERS



€ 217 excl. VAT - total amount for 2 tests (excluding transport costs)

16 participants in 2023 - EXPERIENCE > 10 YEARS



**Need to test another method, evaluate your staff?**

Order **additional test samples** (parcel in its entirety): € 55 excl. VAT (excluding transport costs)

Parameters to analyse
<b>24M26B.1 - Waste water - sent in February 2024 - Refrigerated parcel</b>
DEHP (Di(2-ethylhexyl)phthalate)
<b>24M26B.2 - Waste water - sent in November 2024 - Refrigerated parcel</b>
DEHP (Di(2-ethylhexyl)phthalate)

### PARTICULARITIES



You will receive a concentrated solution in addition to the bottles of waste water. The analyses have to be carried out with the reconstituted samples.



**PROGRAMME 27B:  
C10-C13 CHLOROALKANES (SCCPs) IN WASTE WATERS**



**€ 217 excl. VAT** - total amount for 2 tests (excluding transport costs)

**7 participants** in 2023 - EXPERIENCE > 10 YEARS



**Need to test another method, evaluate your staff?**

Order **additional test samples** (parcel in its entirety): **€ 55 excl. VAT** (excluding transport costs)

Parameters to analyse
<b>24M27B.1 - Waste water - sent in March 2024 - Refrigerated parcel</b>
C10-C13 chloroalkanes
<b>24M27B.2 - Waste water - sent in October 2024 - Refrigerated parcel</b>
C10-C13 chloroalkanes

**PARTICULARITIES**



You will receive a concentrated solution in addition to the bottles of waste water. The analyses have to be carried out with the reconstituted samples.

It is possible that the number of results reported is not sufficient for statistical processing of the data. In this case, comments on the participants' performance will be included in the report.

**PROGRAMME 28B:  
CHLOROACETIC ACID IN WASTE WATERS**



**€ 185 excl. VAT** - total amount for 2 tests (excluding transport costs)

**5 participants** in 2023 - EXPERIENCE > 10 YEARS



**Need to test another method, evaluate your staff?**

Order **additional test samples** (parcel in its entirety): **€ 50 excl. VAT** (excluding transport costs)

Parameters to analyse
<b>24M28B.1 - Waste water - sent in March 2024 - Refrigerated parcel</b>
chloroacetic acid
<b>24M28B.2 - Waste water - sent in October 2024 - Refrigerated parcel</b>
chloroacetic acid

**PARTICULARITIES**



You will receive a concentrated solution in addition to the bottles of waste water. The analyses have to be carried out with the reconstituted samples.

It is possible that the number of results reported is not sufficient for statistical processing of the data. In this case, comments on the participants' performance will be included in the report.

## PROGRAMME 29B: EPICHLOROHYDRIN IN WASTE WATERS



€ 187 excl. VAT - total amount for 2 tests (excluding transport costs)

7 participants in 2023 - EXPERIENCE > 10 YEARS



**Need to test another method, evaluate your staff?**

Order **additional test samples** (parcel in its entirety): € 50 excl. VAT (excluding transport costs)

### Parameters to analyse

#### 24M29B.1 - Waste water - sent in April 2024 - Refrigerated parcel

epichlorohydrin

#### 24M29B.2 - Waste water - sent in December 2024 - Refrigerated parcel

epichlorohydrin

### PARTICULARITIES



You will receive a concentrated solution in addition to the bottles of waste water. The analyses have to be carried out with the reconstituted samples.

## PROGRAMME 52: AOX IN WATERS



**€ 334 excl. VAT** - total amount for 4 tests (excluding transport costs)

**40 participants** in 2023 - EXPERIENCE > 20 YEARS



**Need to test another method, evaluate your staff?**

Order **additional test samples** (parcel in its entirety): **€ 45 excl. VAT** (excluding transport costs)

Parameters to analyse
<b>24M52.1 - Clean water - sent in January 2024 - Refrigerated parcel</b>
AOX
<b>24M52.2 - Waste water - sent in July 2024 - Refrigerated parcel</b>
AOX, SPE-AOX <sup>[1]</sup>
<b>24M52.3 - Clean water - sent in September 2024 - Refrigerated parcel</b>
AOX
<b>24M52.4 - Waste water - sent in November 2024 - Refrigerated parcel</b>
AOX, SPE-AOX <sup>[1]</sup>
<sup>[1]</sup> parameter not covered by accreditation (see general conditions of registration)

**PROGRAMME 55A:  
GLYPHOSATE, AMPA AND AMINOTRIAZOLE IN WASTE WATERS**



€ 442 excl. VAT - total amount for 2 tests (excluding transport costs)

14 participants in 2023 - EXPERIENCE: 5 YEARS



**Need to test another method, evaluate your staff?**

Order **additional test samples** (parcel in its entirety): € 115 excl. VAT (excluding transport costs)

Parameters to analyse
<b>24M55A.1 - Waste water - sent in February 2024 - Refrigerated parcel</b>
AMPA, aminotriazole, glyphosate
<b>24M55A.2 - Waste water - sent in August 2024 - Refrigerated parcel</b>
AMPA, aminotriazole, glyphosate

**PARTICULARITIES**



You will receive a concentrated solution in addition to the bottles of waste water. The analyses have to be carried out with the reconstituted samples.

## PROGRAMME 59A: PERFLUORINATED COMPOUNDS IN WASTE WATERS



€ 484 excl. VAT - total amount for 2 tests (excluding transport costs)

14 participants in 2023 - EXPERIENCE: 5 YEARS



**Need to test another method, evaluate your staff?**

Order **additional test samples** (parcel in its entirety): € 125 excl. VAT (excluding transport costs)

**New:** PFBA, PFBS, PFDA, PFDS, PFDODA (=PFDa), PFDods, PFHpS, PFNA, PFNS, PFPeA, PFPeS, PFTTrDA, PFTTrDS, PFUnDA, PFUnDS

### Parameters to analyse

#### 24M59A.1 - Waste water - sent in May 2024 - Refrigerated parcel

PFBA<sup>[1]</sup> [CAS 375-22-4], PFBS<sup>[1]</sup> [CAS 375-73-5],  
 PFDA<sup>[1]</sup> [CAS 335-76-2], PFDS<sup>[1]</sup> [CAS 335-77-3],  
 PFDODA<sup>[1]</sup> [CAS 307-55-1] (=PFDa),  
 PFDods<sup>[1]</sup> [CAS 79780-39-5],  
 PFHpA [CAS 375-85-9], PFHpS<sup>[1]</sup> [CAS 375-92-8],  
 PFHxA [CAS 307-24-4],  
 PFHxS - linear isomer [CAS 355-46-4] (=PFHS),  
 PFNA [CAS 375-95-1]<sup>[1]</sup>, PFNS<sup>[1]</sup> [CAS 68259-12-1],  
 PFOA [CAS 335-67-1],  
 PFOS - linear isomer [CAS 1763-23-1],  
 PFPeA<sup>[1]</sup> [CAS 2706-90-3], PFPeS<sup>[1]</sup> [CAS 2706-91-4],  
 PFTTrDA<sup>[1]</sup> [CAS 72629-94-8], PFTTrDS<sup>[1]</sup> [CAS 791563-89-8],  
 PFUnDA<sup>[1]</sup> [CAS 2058-94-8], PFUnDS<sup>[1]</sup> [CAS 749786-16-1]

#### 24M59A.2 - Waste water - sent in September 2024 - Refrigerated parcel

PFBA<sup>[1]</sup> [CAS 375-22-4], PFBS<sup>[1]</sup> [CAS 375-73-5],  
 PFDA<sup>[1]</sup> [CAS 335-76-2], PFDS<sup>[1]</sup> [CAS 335-77-3],  
 PFDODA<sup>[1]</sup> [CAS 307-55-1] (=PFDa),  
 PFDods<sup>[1]</sup> [CAS 79780-39-5],  
 PFHpA [CAS 375-85-9], PFHpS<sup>[1]</sup> [CAS 375-92-8],  
 PFHxA [CAS 307-24-4],  
 PFHxS - linear isomer [CAS 355-46-4] (=PFHS),  
 PFNA [CAS 375-95-1]<sup>[1]</sup>, PFNS<sup>[1]</sup> [CAS 68259-12-1],  
 PFOA [CAS 335-67-1],  
 PFOS - linear isomer [CAS 1763-23-1],  
 PFPeA<sup>[1]</sup> [CAS 2706-90-3], PFPeS<sup>[1]</sup> [CAS 2706-91-4],  
 PFTTrDA<sup>[1]</sup> [CAS 72629-94-8], PFTTrDS<sup>[1]</sup> [CAS 791563-89-8],  
 PFUnDA<sup>[1]</sup> [CAS 2058-94-8], PFUnDS<sup>[1]</sup> [CAS 749786-16-1]

<sup>[1]</sup> parameter not covered by accreditation (see general conditions of registration)

## PARTICULARITIES



You will receive a concentrated solution in addition to the bottles of waste water. The analyses have to be carried out with the reconstituted samples.



### Other recommended proficiency test:

↳ **Programme 59B** 'AOF in waste waters'

## PROGRAMME 59B: AOF IN WASTE WATERS

**New**

€ 100 excl. VAT - total amount for 1 test (excluding transport costs)


**New in 2024**



**Need to test another method, evaluate your staff?**

Order **additional test samples** (parcel in its entirety): € 50 excl. VAT (excluding transport costs)

Parameters to analyse
<b>24M59B.1 - Waste water - sent in September 2024 - Refrigerated parcel</b>
AOF (Adsorbable Organic Fluorine)

PARTICULARITIES
<p>Test conducted for a minimum of 10 participants.</p> <div style="display: flex; align-items: flex-start; margin-top: 10px;"> <div style="margin-right: 10px;">  </div> <div> <p><b>Other recommended proficiency tests:</b></p> <ul style="list-style-type: none"> <li>↳ <b>Le programme 59A 'Perfluorinated compounds in waste waters'</b></li> </ul> </div> </div>



## PROGRAMME 71: PAHS AND PCBs IN WASTE WATERS



€ 846 excl. VAT - total amount for 2 tests (excluding transport costs)

38 participants in 2023 - EXPERIENCE: 25 YEARS



**Need to test another method, evaluate your staff?**

Order **additional test samples** (parcel in its entirety): € 215 excl. VAT (excluding transport costs)

### Parameters to analyse

#### 24M71.1 - Waste water - sent in March 2024 - Refrigerated parcel

**PAHs:** 2-methylfluoranthene, 2-methylnaphtalene, acenaphtene, anthracene, benzo[a]anthracene, benzo[a]pyrene, benzo[b]fluoranthene, benzo[g,h,i]perylene, benzo[k]fluoranthene, chrysene, dibenzo[a,h]anthracene, fluoranthene, fluorene, indeno[1,2,3 - cd]pyrene, naphtalene, phenanthrene, pyrene, acenaphtylene

**PCBs:** PCB 28, PCB 52, PCB 101, PCB 118, PCB 138, PCB 153, PCB 180

#### 24M71.2 - Waste water - sent in October 2024 - Refrigerated parcel

**PAHs:** 2-methylfluoranthene, 2-methylnaphtalene, acenaphtene, anthracene, benzo[a]anthracene, benzo[a]pyrene, benzo[b]fluoranthene, benzo[g,h,i]perylene, benzo[k]fluoranthene, chrysene, dibenzo[a,h]anthracene, fluoranthene, fluorene, indeno[1,2,3 - cd]pyrene, naphtalene, phenanthrene, pyrene, acenaphtylene

**PCBs:** PCB 28, PCB 52, PCB 101, PCB 118, PCB 138, nPCB 153, PCB 180

## PROGRAMME 72A: PESTICIDES AND DEGRADATION RESIDUES - LIST 1 - IN WASTE WATERS



€ 834 excl. VAT - total amount for 2 tests (excluding transport costs)

22 participants in 2023 - EXPERIENCE: 25 YEARS



**Need to test another method, evaluate your staff?**

Order **additional test samples** (parcel in its entirety): € 210 excl. VAT (excluding transport costs)

### Parameters to analyse

#### 24M72A.1 - Waste water - sent in July 2024 - Refrigerated parcel

2,4'-DDD , 2,4'-DDE, 2,4'-DDT, 4,4'-DDD, 4,4'-DDE,  
4,4'-DDT, aclonifen, alachlor, aldrin, alpha-endosulfan,  
alpha-HCH, beta-endosulfan, beta-HCH, bifenox, chlordane (total),  
chlorfenvinphos, chlorpropham, chlorpyriphos-ethyl, cis-chlordane (CAS 5103-71-9),  
cypermethrin, delta-HCH, diazinon, dichlorvos, dicofol, dieldrin, endosulfan (total),  
endrin, epsilon HCH, HCH total (= sum of isomers alpha+beta+gamma+delta), heptachlor,  
heptachlorepoxyde (total), heptachlorepoxyde endo trans, heptachlorepoxyde exo cis,  
iprodione<sup>[1]</sup>, isodrin, lindane (gamma-HCH), mirex, oxadiazon,  
pendimethalin, quinoxyfen, trans-chlordane (CAS 5103-74-2),  
tributyl phosphate, trifluralin

#### 24M72A.2 - Waste water - sent in November 2024 - Refrigerated parcel

2,4'-DDD , 2,4'-DDE, 2,4'-DDT, 4,4'-DDD, 4,4'-DDE,  
4,4'-DDT, aclonifen, alachlor, aldrin, alpha-endosulfan, alpha-HCH,  
beta-endosulfan, beta-HCH, bifenox, chlordane (total),  
chlorfenvinphos, chlorpropham, chlorpyriphos-ethyl, cis-chlordane (CAS 5103-71-9),  
cypermethrin, delta-HCH, diazinon, dichlorvos, dicofol, dieldrin, endosulfan (total),  
endrin, epsilon HCH, HCH total (= sum of isomers alpha+beta+gamma+delta), heptachlor,  
heptachlorepoxyde (total), heptachlorepoxyde endo trans,  
heptachlorepoxyde exo cis, iprodione<sup>[1]</sup>, isodrin, lindane (gamma-HCH), mirex, oxadiazon,  
pendimethalin, quinoxyfen, trans-chlordane (CAS 5103-74-2),  
tributyl phosphate, trifluralin

<sup>[1]</sup> parameter not covered by accreditation (see general conditions of registration)

### PARTICULARITIES

**\*Particularity of the test design:** You have 2L of sample (2 bottles of 1L) to carry out one measurement of all the parameters.

**PROGRAMME 72B:  
PESTICIDES AND DEGRADATION RESIDUES - LIST 2 - IN WASTE WATERS**



**€ 480 excl. VAT** - total amount for 2 tests (excluding transport costs)

**22 participants** in 2023 - EXPERIENCE: 25 YEARS



**Need to test another method, evaluate your staff?**

Order **additional test samples** (parcel in its entirety): **€ 120 excl. VAT** (excluding transport costs)

<b>Parameters to analyse</b>
<b>24M72B.1 - Waste water - sent in July 2024 - Refrigerated parcel</b>
2,4-D, MCPA, atrazine, azoxystrobin, bentazon, boscalid, chlortoluron, cybutryn, cyprodinil, deisopropylatrazine, desethylatrazine, desethylterbuthylazine, diflufenicanil, diuron, imidaclopride, isoproturon, linuron, metaldehyde, metazachlor, nicosulfuron, simazine, tebuconazole, terbuthylazine, terbutryn, thiabendazole
<b>24M72B.2 - Waste water - sent in November 2024 - Refrigerated parcel</b>
2,4-D, MCPA, atrazine, azoxystrobin, bentazon, boscalid, chlortoluron, cybutryn, cyprodinil, deisopropylatrazine, desethylatrazine, desethylterbuthylazine, diflufenicanil, diuron, imidaclopride, isoproturon, linuron, metaldehyde, metazachlor, nicosulfuron, simazine, tebuconazole, terbuthylazine, terbutryn, thiabendazole

**PROGRAMME 73:  
ALKYLPHENOL ETHOXYLATES IN WASTE WATERS**



**€ 283 excl. VAT** - total amount for 2 tests (excluding transport costs)

**14 participants** in 2023 - EXPERIENCE 10 YEARS



**Need to test another method, evaluate your staff?**

Order **additional test samples** (parcel in its entirety): **€ 75 excl. VAT** (excluding transport costs)

**Parameters to analyse**

**24M73.1 - Waste water - sent in January 2024 - Refrigerated parcel**

NP1EO - 4-nonylphenol monoethoxylate  
NP2EO - 4-nonylphenol diethoxylate  
OP1EO - 4-octylphenol monoethoxylate  
OP2EO - 4-octylphenol diethoxylate

**24M73.2 - Waste water - sent in July 2024 - Refrigerated parcel**

NP1EO - 4-nonylphenol monoethoxylate  
NP2EO - 4-nonylphenol diethoxylate  
OP1EO - 4-octylphenol monoethoxylate  
OP2EO - 4-octylphenol diethoxylate

**PARTICULARITIES**



You will receive a concentrated solution in addition to the bottles of waste water. The analyses have to be carried out with the reconstituted samples.