

AGLAE 2024

PROFICIENCY TESTING SCHEME CATALOGUE

BIOLOGY AND ECOTOXICOLOGY



AGLAE Association

Parc des Pyramides
427 rue des Bourreliers
59320 Hallennes lez Haubourdin
France

☎ +33 (0)3 20 16 91 40

www.association-aglae.fr

contact@association-aglae.fr

List of proficiency tests

Biology and ecotoxicology
12 Macroinvertebrates of running waters
13 Ecotoxicology
16 Biological Diatom Index
34 Protozoans in fresh waters

Glossary of the matrices used

Name of the matrix for environmental biology	Below the matrices that can be used, alone or mixed, to comply with the representativity of the specified matrix									
	public drinking waters	bottled waters	waters from rivers or lakes	water from well or drill	waste waters from urban WWTP	sea water	domestic hot waters	water from industrial origin	swimming pool waters	Synthetic waters
Bathing freshwaters			x							
Bathing saline waters						x				
Saline waters						x				x
Surface waters Fresh waters			x							x
Clean waters	x	x		x			x		x	
Waste waters					x					x

WWTP: Waste Water Treatment Plant

Additional services



ADDITIONAL TEST SAMPLES TO TEST ANOTHER METHOD, EVALUATE A TECHNICIAN

- ✓ Test samples available for almost all the tests at half price.
- ✓ Besides your usual distribution, you receive one (or several) additional parcel(s).
- ✓ The results of these samples are not statistically processed by AGLAE but for most tests you get a sheet **in your results file** where to **calculate your z-score**. Note that this sheet can also be used in case of unit error, incorrect results' report, etc.

⇒ Check the **list of samples and their price on your Member Area** (Downloads / Catalogues) and contact us to receive a quote. These additional samples need to be ordered after you registration for the test and before the shipment.



QUALITY CONTROL MATERIALS FOR YOUR MONITORING AND IMPROVEMENT OF YOUR ANALYTICAL PERFORMANCE

- ✓ Materials coming from the **solid matrices tests: sediments, sludge, polluted sites and soils**.
- ✓ Purchased at any time during the year and delivered with a certificate presenting the precision values obtained during the test (assigned value and uncertainties).

⇒ Check the **list of materials, prices and available quantities on your Member Area** (Downloads / Catalogues) and contact us to receive a quote.

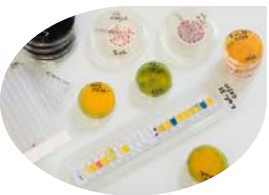


TRAINING SESSIONS IN MICROBIOLOGY: ONE TOPIC POSSIBLY PROVIDED IN ENGLISH

Two-day on-line session to become operational for:

- ✓ Characterising a microbiological method according to ISO 13843 in order to validate it

⇒ *Should you be interested in such a session, please get back to us.*



CUSTOMIZED SERVICE: 'PERFORMANCE CHARACTERISTICS OF MICROBIOLOGICAL METHODS'

Do you need to characterise specific methods?

AGLAE can provide you support to establish methods performance characteristics, in conformity with ISO 13843*. Benefit from AGLAE's technical and statistical experience to validate your microbiological method.

* *Water quality — Requirements for establishing performance characteristics of quantitative microbiological methods*

⇒ *Should you have such needs, contact us to study your request together and issue a quote.*



SUMMARY OF YOUR RESULTS FOR WATER MICROBIOLOGY AND WATER FOR MEDICAL USE TESTS

Gather at any time your results and performance: for a selected period, your results are grouped in an Excel file; this is a tool to support you in your Internal Quality Control, your audits...

Programmes' description

Content

For each programme's description, you will find the technical content of the test : parameters, matrices, dispatch month...

The concentration levels, volumes and stabilisation modalities of the samples are available on request.

The samples' dispatch months are given for information only.

Transport costs depend on the destination and tests selected within the programmes; contact

Our aim is to prepare materials as close as possible to the samples analysed in routine: the contamination levels can therefore be very low or very high.

➔ **Our concentration levels are available on request.**

Caption



This logo shows that the programme is accredited by LABORATORIES section in compliance with ISO/IEC 17043.

PROGRAMME 12: MACROINVERTEBRATES OF RUNNING WATERS



€ 744 excl. VAT - total amount for 1 test (excluding transport costs)

42 participants in 2023 - EXPERIENCE > 10 YEARS

Parameters to analyse

24M12.1 - Habitation of running waters - sent in September 2024

Faunal list according to NF T90-350 and/or NF T90-388 and,
as an option, calculation of IBGN indexes,
MCPE12 (Code Sandre 5912)
and/or I2M2 (Code Sandre 7613) (no sampling step)

PARTICULARITIES



Fixation reagent: ethanol

Registration deadline: 30 April 2024

Laboratories wishing a second expertise for some singular taxa highlighted during the statistical processing will be able to send them back to AGLAE. To do so, participants will be contacted as soon as the review is issued to specify how to send the concerned taxa back.

This second expertise will allow a better consideration of the profile of singular laboratories for a possible re-ranking of analytical performance.

The test documents of this Proficiency Testing Scheme are not translated into English.

PROGRAMME 13: ECOTOXICOLOGY



€ 495 excl. VAT - total amount for 2 tests (excluding transport costs)

31 participants in 2023 - EXPERIENCE: 25 YEARS



Need to test another method, evaluate your staff?

Order **additional test samples** (parcel in its entirety): € 125 excl. VAT (excluding transport costs)

Parameters to analyse

24M13.1 - Fresh and waste waters - sent in March 2024 - Refrigerated parcel

"Daphnia" test:
Determination of the inhibition of the mobility of *Daphnia magna Straus* – acute toxicity test

24M13.2 - Fresh and waste waters - sent in September 2024 - Refrigerated parcel

"Daphnia" test:
Determination of the inhibition of the mobility of *Daphnia magna Straus* – acute toxicity test

PARTICULARITIES



The determination of the inhibitory effect of water samples on the light emission of *Vibrio fischeri* (luminescent bacteria test - "Microtox" ^[1] test) can also be carried out on these samples. Data statistical treatment may be performed if the number of participants' results is sufficient.

^[1] parameter not covered by accreditation (see general conditions of registration)

PROGRAMME 16: BIOLOGICAL DIATOM INDEX



€ 298 excl. VAT - total amount for 1 test (excluding transport costs)

23 participants in 2023 - EXPERIENCE: 10 YEARS

Parameters to analyse

24M16.1 - Running water - sent in October 2024

Floristic list according to NF T90-354.

PARTICULARITIES



Fixation reagent: ethanol.

Registration deadline: 31 May 2024

Transmission of results via Omnidia software: our Biology data processing team will access the data of your laboratory to perform the statistical processing.

Indexes (biological diatom index and pollution-sensitivity index) will be calculated by AGLAE via OMNIDIA software.

Photographic prints of 10 remarkable species will be included in the test report.



Assessment of several technicians is possible: referent results and additional results can be reported.

PROGRAMME 34: PROTOZOANS IN FRESH WATERS

Test materials are suitable for checking analyses in public distribution water and non-atypical natural mineral waters.



€ 655 excl. VAT - total amount for 2 tests (excluding transport costs)

20 participants in 2023 - EXPERIENCE > 15 YEARS



Need to test another method, evaluate your staff?

Order **additional test samples** (parcel in its entirety): **€ 165 excl. VAT** (excluding transport costs)

Parameters to analyse
24M34.1 - Clean water - sent in April 2024 - Refrigerated parcel
Cryptosporidium oocysts (total) Cryptosporidium oocysts (healthy) Giardia cysts (total) Giardia cysts (healthy)
24M34.2 - Clean water - sent in November 2024 - Refrigerated parcel
Cryptosporidium oocysts (total) Cryptosporidium oocysts (healthy) Giardia cysts (total) Giardia cysts (healthy)

PARTICULARITIES

With one of the 2 tubes, only one analysis of the total concentrate has to be carried out by I.M.S. reconcentration, staining, identification and enumeration.

The second tube of concentrate will have to be re-suspended in 10 litres of drinking water. A complete analysis will be carried out on this 10-litre sample (complete analysis: filtration, concentration, staining, identification and enumeration).